

TRAFFIC DATA

CURRENT A.D.T.: 8,146 (2008)
 DESIGN YEAR A.D.T.: 9,954 (2028)
 D.H.V.: 1095 (2028)
 D: 55%
 T: 3%

HORIZ. CURVE DATA @ CONSTRUCTION BASELINE

P.I. STA.	= 14+10.54
DELTA	= 6°32'36" (LT)
D	= 2°28'15"
T	= 132.56
L	= 264.84
E	= 2,319.00
R	= 3.79
S.E.	= N/A

VERTICAL CURVE DATA

P.V.I. STA.	= 15+11.15
ELEV.	= 231.72
V.C.	= 117.00 FT.
M.O.	= 2.27

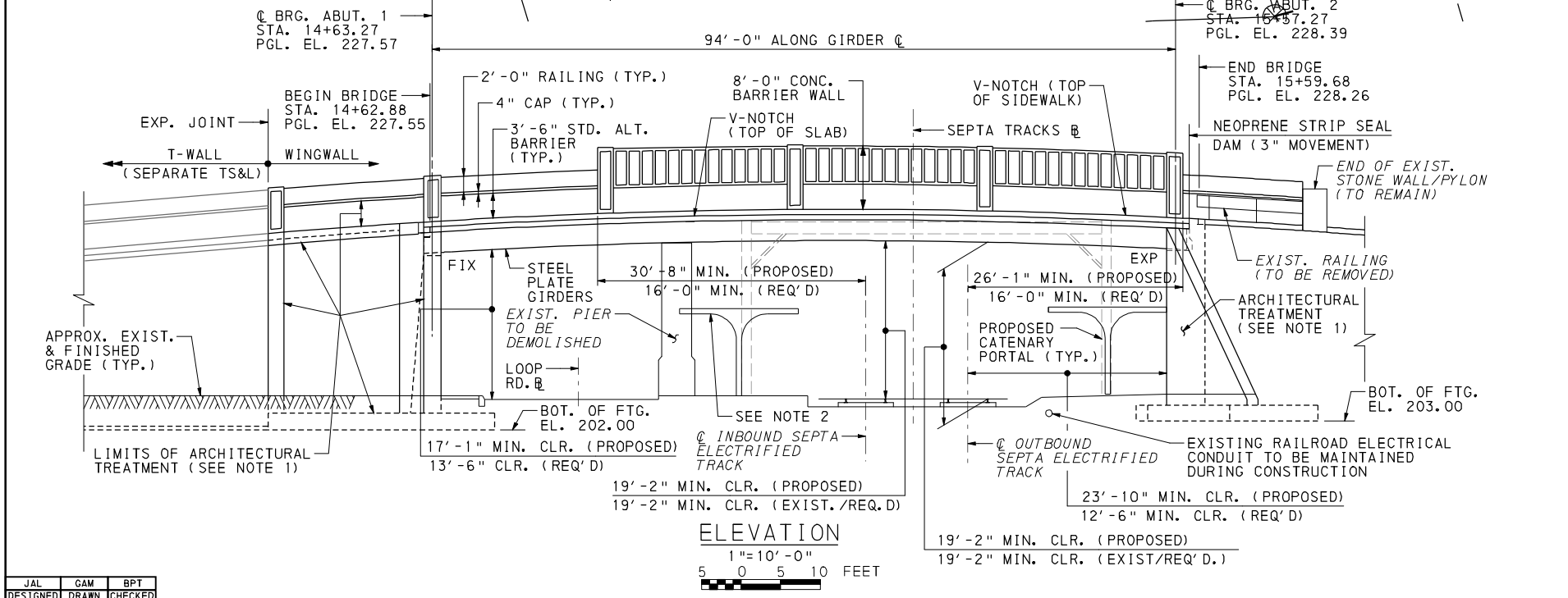
+8.51% -7.00%

- NOTES:**
1. ARCHITECTURAL TREATMENT OF CONCRETE BARRIERS, ABUTMENTS & WINGWALLS TO BE A MASONRY TYPE FORMLINER IN ACCORDANCE WITH BOARD OF HISTORICAL AND ARCHITECTURAL REVIEW CERTIFICATE OF APPROPRIATENESS. PEDESTRIAN RAILING SHOULD BE OF TYPE AND CONSTRUCTION AS APPROVED BY THE BOARD OF HISTORICAL AND ARCHITECTURAL REVIEW. SEE CERTIFICATE OF APPROPRIATENESS ISSUED JULY 22, 2003.
 2. EXISTING CANOPY AT PIER TO BE RECONSTRUCTED TO MATCH ORIGINAL AS-BUILT CONDITION. CANOPY MODIFICATIONS DUE TO PORTAL LOCATIONS TO BE COORDINATED WITH SEPTA DURING FINAL DESIGN.
 3. REMOVE EXISTING PIER TO 2'-0" BELOW FINISHED GRADE.
 4. PROPOSED UTILITY DETAILS AND SUPPORTS TO BE COORDINATED WITH UTILITY COMPANIES DURING FINAL DESIGN.
 5. BORINGS MARKED "C" ARE CONDITIONAL BASED ON UNIFORMITY OF SUBSURFACE CONDITIONS FOUND.
 6. AASHTO LRFD BRIDGE DESIGN SPECIFICATIONS, THIRD EDITION, 2004 AND AS SUPPLEMENTED BY DESIGN MANUAL PART 4, SEPTEMBER 2007 EDITION INCLUDING LATEST REVISIONS; WELDING TO CONFORM TO AASHTO/AWS D1.5M/D1.5:2008 - BRIDGE WELDING CODE.
 7. PROJECT WILL BE CONSTRUCTED UNDER A DETOUR.
 8. ALL BEARINGS TO BE ELASTOMERIC BEARINGS.
 9. PUC DOCKET NUMBER XXA.

PROPOSED BORING TABLE

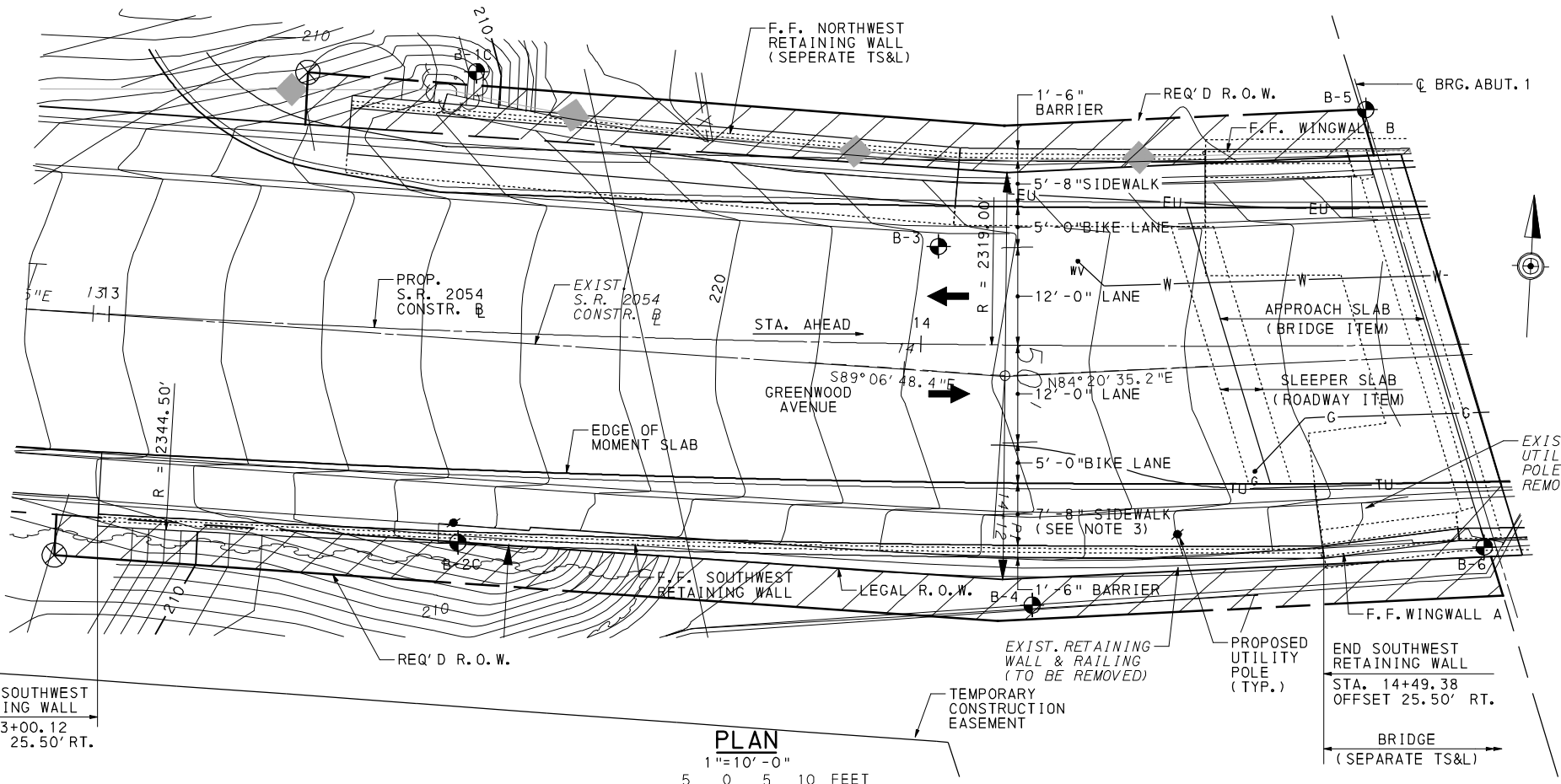
BORING NUMBER	STATION	OFFSET (FT.)
B-5	14+55.00	29.00 LT
B-6	14+69.00	25.00 RT
B-7C	14+87.00	26.00 LT
B-8C	14+97.00	27.00 RT
B-9	15+44.00	55.00 LT
B-10	15+49.00	27.00 LT
B-11	15+63.00	25.00 RT
B-12	15+71.00	58.00 RT

Mark	Description	By	Chk'd.	Recm'd.	Date
REVISIONS					

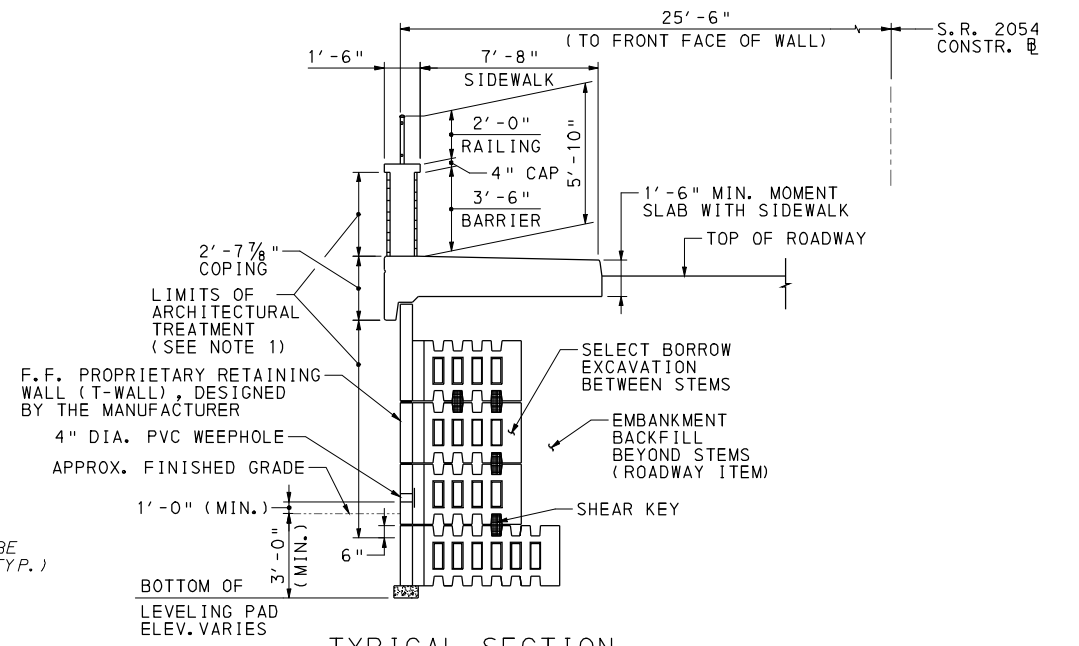


COMMONWEALTH OF PENNSYLVANIA
 DEPARTMENT OF TRANSPORTATION

MONTGOMERY COUNTY
 SR 2054 SEC 89S
 SEG 0030, OFF 1729
 SR 2054 STA 15+13.50
 GREENWOOD AVENUE OVER SEPTA
 ONE SPAN COMP. STEEL GIRDER BRIDGE
 GENERAL BRIDGE PLAN



PLAN
1"=10'-0"
5 0 5 10 FEET



TYPICAL SECTION
SCALE: 1/4" = 1'-0"
2 0 2 4 FEET

HORIZ. CURVE DATA @ CONSTRUCTION BASELINE

P. I. STA.	= 14+10.54
DELTA	= 6°32'36" (LT)
D	= 2°28'15"
T	= 132.56
L	= 264.84
R	= 2,319.00
E	= 3.79
S. E.	= N/A

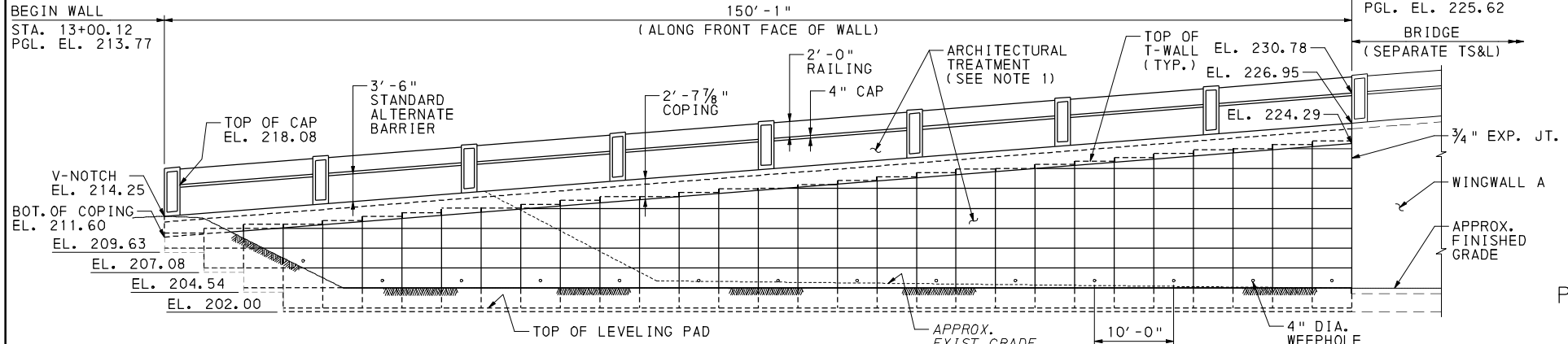
VERTICAL CURVE DATA

P. V. I. STA.	= 15+11.15
ELEV.	= 231.72
V. C.	= 117.00 FT.
M. O.	= 2.27

+8.51% -7.00%

BEGIN SOUTHWEST RETAINING WALL
STA. 13+00.12
OFFSET 25.50' RT.

BEGIN WALL
STA. 13+00.12
PGL. EL. 213.77



ELEVATION
1"=10'-0"
5 0 5 10 FEET

PROPOSED BORING TABLE

BORING NUMBER	STATION	OFFSET (FT.)
B-1C	13+44.00	32.00 LT
B-2C	13+44.00	26.00 RT
B-3	14+02.00	12.00 LT
B-4	14+14.00	32.00 RT
B-5	14+55.00	29.00 LT
B-6	14+69.00	25.00 RT

Mark	Description	By	Chk'd.	Recm'd.	Date
REVISIONS					

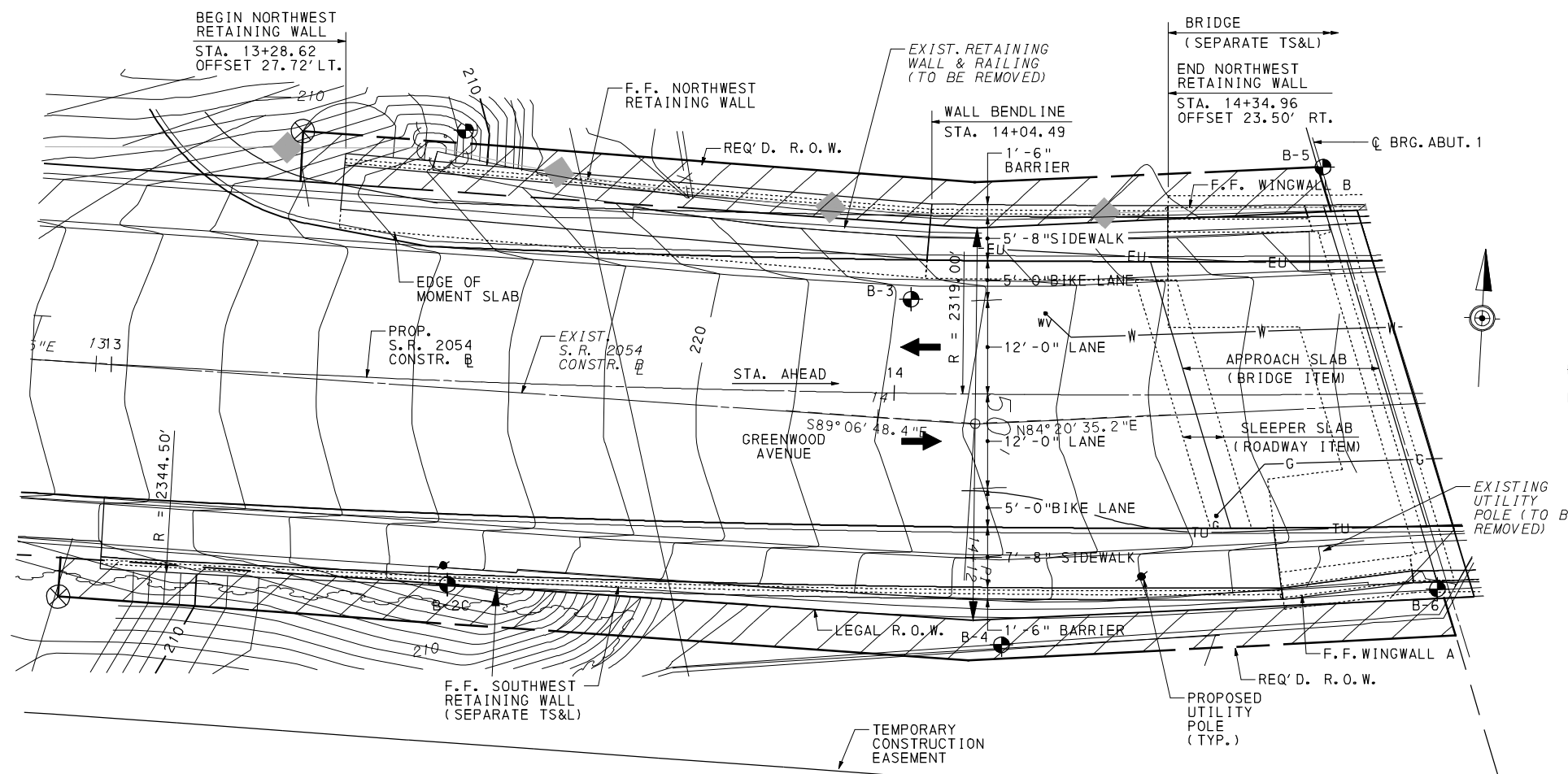
- NOTES:**
1. ARCHITECTURAL TREATMENT OF CONCRETE BARRIER AND RETAINING WALL TO BE A MASONRY TYPE FORMLINER IN ACCORDANCE WITH BOARD OF HISTORICAL AND ARCHITECTURAL REVIEW CERTIFICATE OF APPROPRIATENESS. PEDESTRIAN RAILING SHOULD BE OF TYPE AND CONSTRUCTION AS APPROVED BY THE BOARD OF HISTORICAL AND ARCHITECTURAL REVIEW. SEE CERTIFICATE OF APPROPRIATENESS ISSUED JULY 22, 2003.
 2. BORINGS MARKED "C" ARE CONDITIONAL BASED ON UNIFORMITY OF SUBSURFACE CONDITIONS FOUND.
 3. ADDITIONAL 2'-0" SIDEWALK TO ACCOMODATE PROPOSED UTILITY POLES.
 4. PROJECT WILL BE CONSTRUCTED UNDER A DETOUR.
 5. AASHTO LRFD BRIDGE DESIGN SPECIFICATIONS, THIRD EDITION, 2004 AND AS SUPPLEMENTED BY DESIGN MANUAL PART 4, SEPTEMBER 2007 EDITION INCLUDING LATEST REVISIONS. WELDING TO CONFORM TO AASHTO/AWS D1.5M/D1.5:2008 - BRIDGE WELDING CODE.

COMMONWEALTH OF PENNSYLVANIA
DEPARTMENT OF TRANSPORTATION

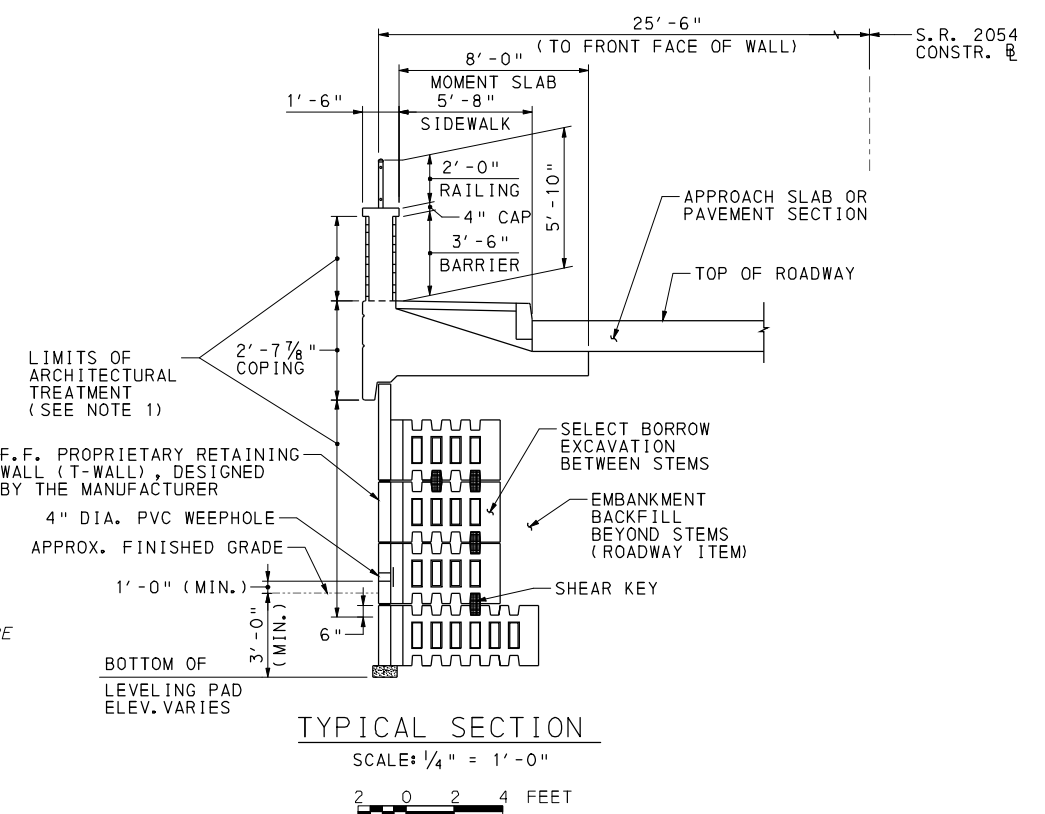
MONTGOMERY COUNTY
SR 2054 SEC 89S
SEG 0030, OFF 1641
SR 2054 STA 13+74.75
GREENWOOD AVENUE OVER SEPTA
ONE SPAN COMP. STEEL GIRDER BRIDGE
SOUTHWEST RETAINING WALL

RECOMMENDED _____ SHEET 1 OF 1

S-XXXXX



PLAN
1"=10'-0"
5 0 5 10 FEET



TYPICAL SECTION
SCALE: 1/4" = 1'-0"
2 0 2 4 FEET

HORIZ. CURVE DATA @ CONSTRUCTION BASELINE

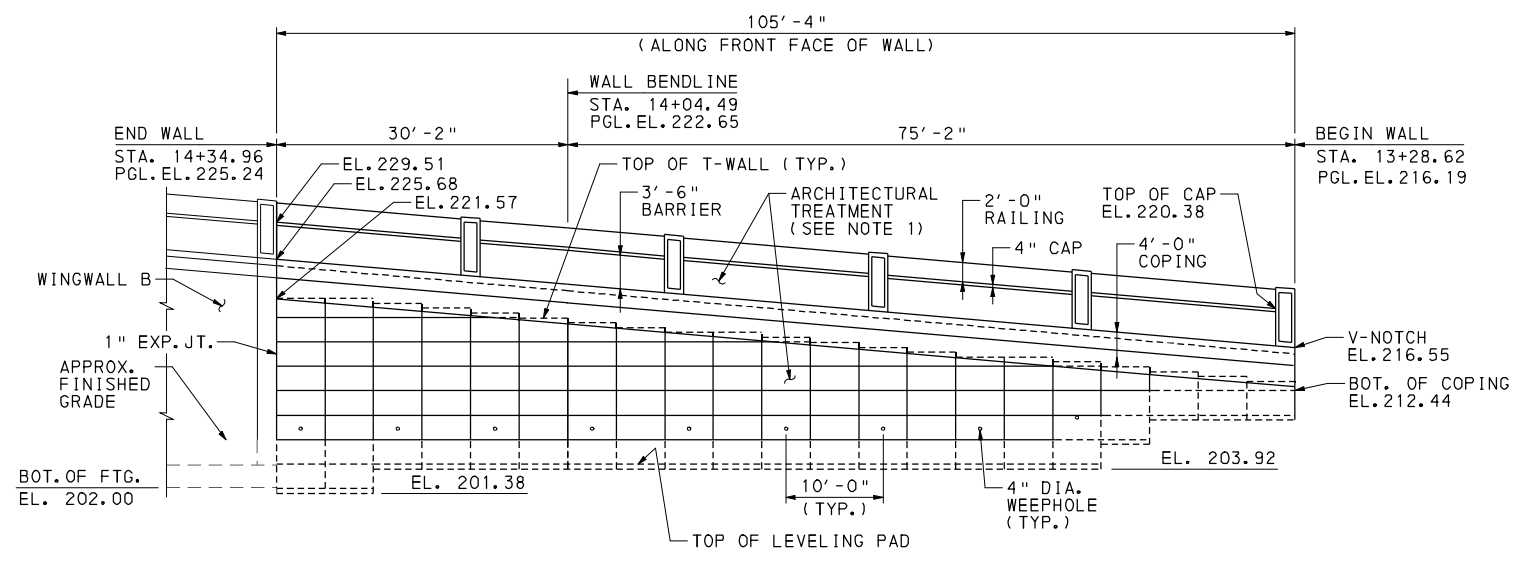
P. I. STA.	= 14+10.54
DELTA	= 6° 32' 36" (LT)
D	= 2° 28' 15"
T	= 132.56
L	= 264.84
R	= 2,319.00
E	= 3.79
S. E.	= N/A

PROPOSED BORING TABLE

BORING NUMBER	STATION	OFFSET (FT.)
B-1C	13+44.00	32.00 LT
B-2C	13+44.00	26.00 RT
B-3	14+02.00	12.00 LT
B-4	14+14.00	32.00 RT
B-5	14+55.00	29.00 LT
B-6	14+69.00	25.00 RT

VERTICAL CURVE DATA

P. V. I. STA.	= 15+11.15
ELEV.	= 231.72
V. C.	= 117.00 FT.
M. O.	= 2.27



ELEVATION
(LOOKING SOUTH)
1"=10'-0"
5 0 5 10 FEET

- NOTES:**
1. ARCHITECTURAL TREATMENT OF CONCRETE BARRIER AND RETAINING WALL TO BE A MASONRY TYPE FORMLINER IN ACCORDANCE WITH BOARD OF HISTORICAL AND ARCHITECTURAL REVIEW CERTIFICATE OF APPROPRIATENESS. PEDESTRIAN RAILING SHOULD BE OF TYPE AND CONSTRUCTION AS APPROVED BY THE BOARD OF HISTORICAL AND ARCHITECTURAL REVIEW. SEE CERTIFICATE OF APPROPRIATENESS ISSUED JULY 22, 2003.
 2. BORINGS MARKED "C" ARE CONDITIONAL BASED ON UNIFORMITY OF SUBSURFACE CONDITIONS FOUND.
 3. PROJECT WILL BE CONSTRUCTED UNDER A DETOUR.
 4. AASHTO LRFD BRIDGE DESIGN SPECIFICATIONS, THIRD EDITION, 2004 AND AS SUPPLEMENTED BY DESIGN MANUAL PART 4, SEPTEMBER 2007 EDITION INCLUDING LATEST REVISIONS. WELDING TO CONFORM TO AASHTO/AWS D1.5M/D1.5:2008 - BRIDGE WELDING CODE.

Mark	Description	By	Chk'd	Recm'd	Date
REVISIONS					

COMMONWEALTH OF PENNSYLVANIA
DEPARTMENT OF TRANSPORTATION

MONTGOMERY COUNTY
SR 2054 SEC 89S
SEG 0030, OFF 1648
SR 2054 STA 13+81.75
GREENWOOD AVENUE OVER SEPTA
ONE SPAN COMP. STEEL GIRDER BRIDGE
NORTHWEST RETAINING WALL

RECOMMENDED _____ SHEET 1 OF 1

S-XXXXX