

DISTRICT	COUNTY	ROUTE	SECTION	SHEET
6-0	MONTGOMERY	--	--	1 OF 1
CHEL TENHAM TOWNSHIP				
REVISIONS				
REVISION NUMBER	REVISIONS	DATE	BY	
1	REVISED PER COUNTY REVIEW LETTER DATED 12/23/19	06/04/20	DZ	
2	REVISED PER COUNTY REVIEW LETTER DATED 01/28/20	09/08/20	DZ	
3	REVISED PER COUNTY REVIEW LETTER DATED 10/13/20	11/05/20	DZ	

**GENERAL NOTES**

THIS WORK CONSISTS OF THE MAINTENANCE OF TRAFFIC AND THE PROTECTION OF THE TRAVELING PUBLIC APPROACHING THE CONSTRUCTION AREA AND WITHIN THE LIMITS OF CONSTRUCTION.

FURNISH, ERECT, PLACE AND MAINTAIN TRAFFIC CONTROL SIGNS AND DEVICES AND MAINTAIN TRAFFIC DURING HOURS OF CONSTRUCTION AND AT ALL OTHER TIMES IN ACCORDANCE WITH THE METHODS INDICATED ON THESE DRAWINGS AND,

1. THE SPECIAL PROVISIONS OF THE CONTRACT
2. PA CODE, TITLE 67, CHAPTER 212, OFFICIAL TRAFFIC CONTROL DEVICES
3. PDT PUBLICATION 213, WORK ZONE TRAFFIC CONTROL GUIDELINES
4. PDT PUBLICATION 35, APPROVED CONSTRUCTION MATERIALS (BULLETIN 15)
5. PDT PUBLICATION 408, SPECIFICATIONS
6. MANUAL ON UNIFORM TRAFFIC CONTROL DEVICES (MUTCD)

IMMEDIATELY UPON COMPLETION OF THE WORK, REMOVE THE DEVICES. THE DEPARTMENT WILL REMOVE ANY TRAFFIC CONTROL DEVICES ERECTED BY DEPARTMENT FORCES.

COVER OR REMOVE ALL SIGNS NOT IN USE.

ALL DISTANCES MAY BE ADJUSTED SLIGHTLY TO FIT FIELD CONDITIONS.

DURING HOURS OF DARKNESS, ALL SIGNS SHALL BE REFLECTORIZED OR ILLUMINATED.

EXISTING TRAFFIC CONTROL DEVICES SHALL BE MODIFIED AS NEEDED FOR THE DURATION OF THE DETOUR.

UNLESS OTHERWISE SPECIFIED, ALL TRAFFIC CONTROL DEVICES FOR THE DETOUR SHALL BE FURNISHED, ERECTED, MODIFIED, MAINTAINED AND SUBSEQUENTLY REMOVED BY THE CONTRACTOR FOR CONTRACT OPERATIONS.

ACCESS TO ALL PRIVATE DRIVEWAYS AND EMERGENCY SERVICES MUST BE PROVIDED AT ALL TIMES. LOCATE ALL SIGNS SO THAT SIGHT DISTANCE IS NOT OBSTRUCTED AT DRIVEWAYS AND SIDE STREETS.

THE CONTRACTOR MUST CONTACT THE PENNDOT PRESS OFFICE (610-205-6934) AND MONTGOMERY COUNTY MAINTENANCE OFFICE (610-275-2368) 14 DAYS PRIOR TO START OF THE DETOUR.

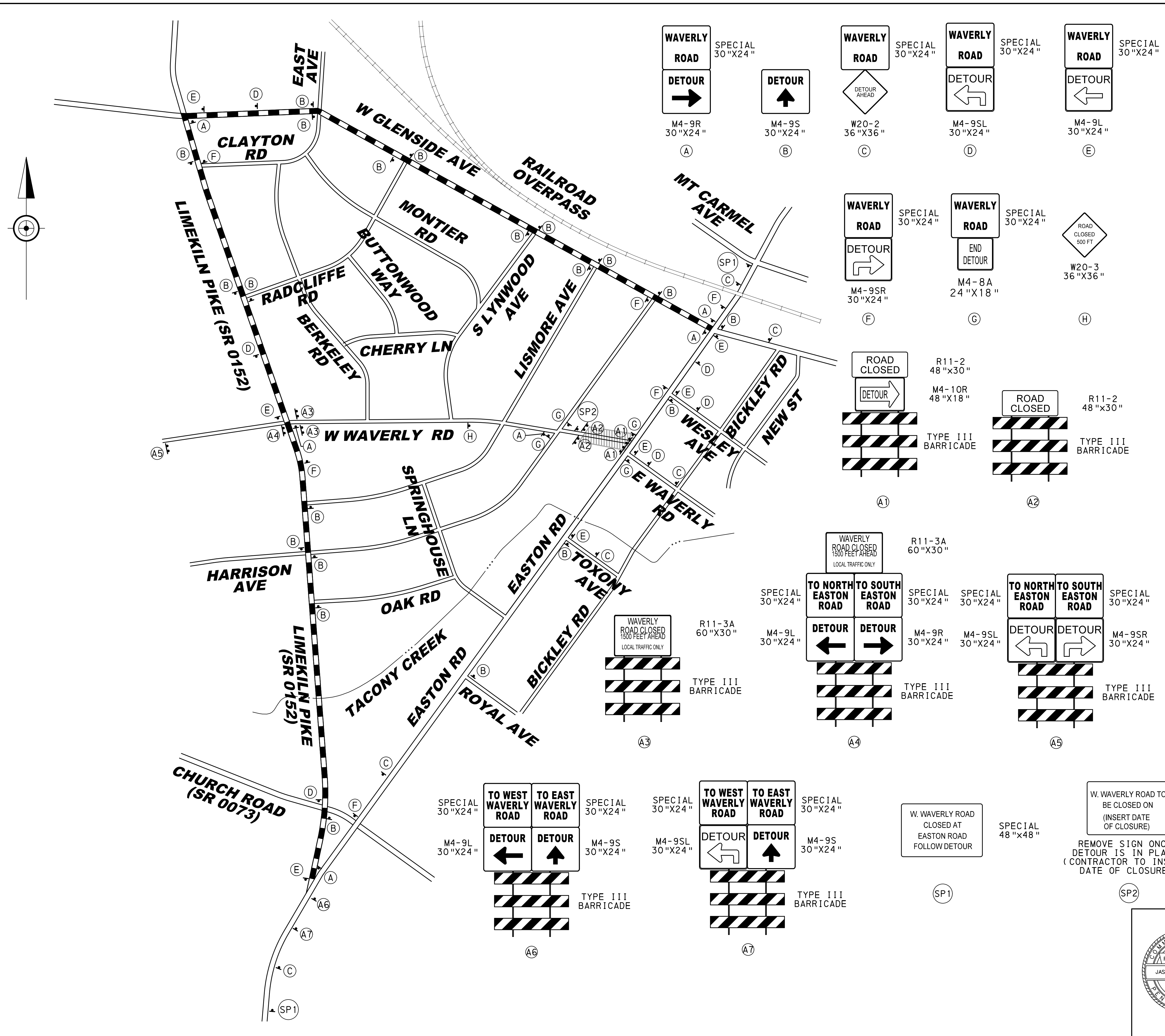
THE CONTRACTOR IF DIRECTED BY THE PENNDOT INSPECTOR MAY BE REQUIRED TO TRIM LOW LYING TREES ALONG THE DETOUR ROUTE TO A MINIMUM HEIGHT OF 14'-6" FOR VISIBILITY OF THE DETOUR SIGNS.

INSTALL ADVANCE ROAD CLOSURE SIGN 14 DAYS PRIOR TO ROAD CLOSURE.

NOTE: USE SUFFICIENT NUMBER OF BARRICADES TO CLOSE ENTIRE WIDTH OF ROADWAY.

**DETOUR MAP LEGEND**

- PROJECT LOCATION
- DETOUR ROUTE
- SIGN
- TYPE III BARRICADE
- SIGN REFERENCE LETTER



**TRAFFIC PLANNING AND DESIGN, INC.**  
 www.TrafficPD.com | 610.326.3100 | TPD@TrafficPD.com

DATE: 11/18/19 | PROJECT DESIGNER: JTD | JOB NO: PRPV.00040

**DETOUR PLAN**

THIS IS A COPY. THE ORIGINAL DRAWING IS ON FILE WITH TRAFFIC PLANNING AND DESIGN, INC. ANY AND ALL LIABILITY IS LIMITED TO THE ORIGINAL, UP TO AND INCLUDING THE LAST REVISIONS.

Est. 1989  
 REGISTERED PROFESSIONAL ENGINEER  
 JASON TUAN DUONG  
 No. PE061562

P:\PW-15-15-1\pdr\proj\act\15\Documents\15\GlenSide - ChelTenham\CADD (HOP) InRoads 552\VP\an\detour01.dgn  
 4/14/2021 3:12:34 PM 1:288 dzhang