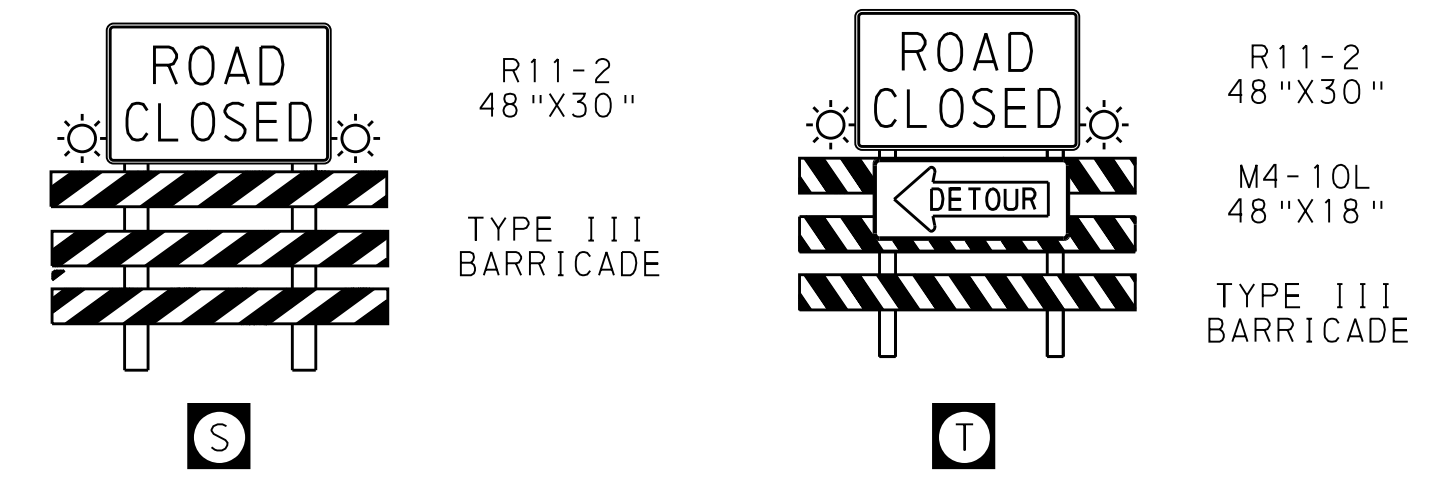
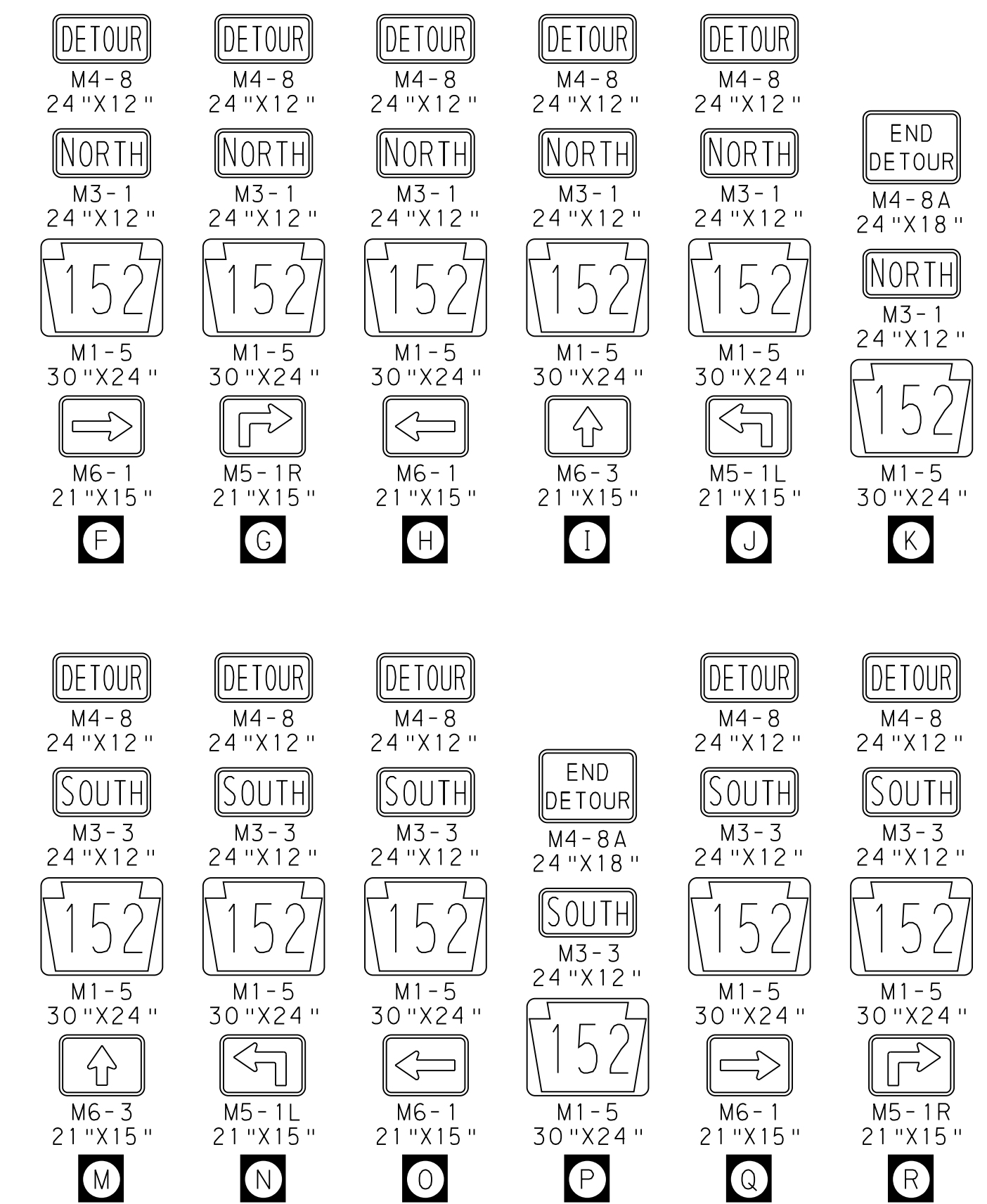
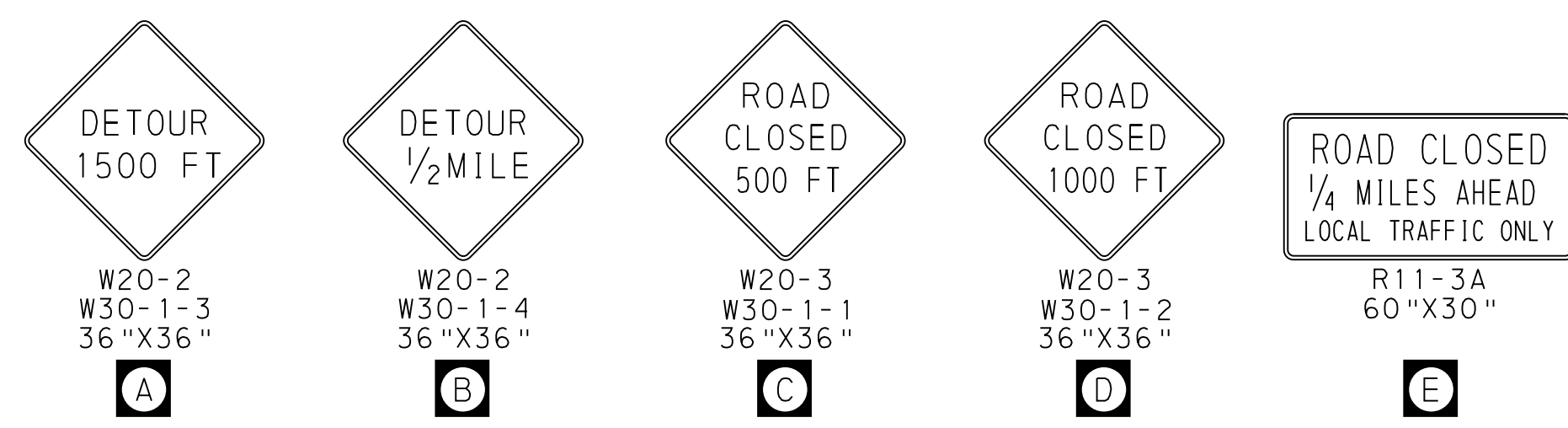
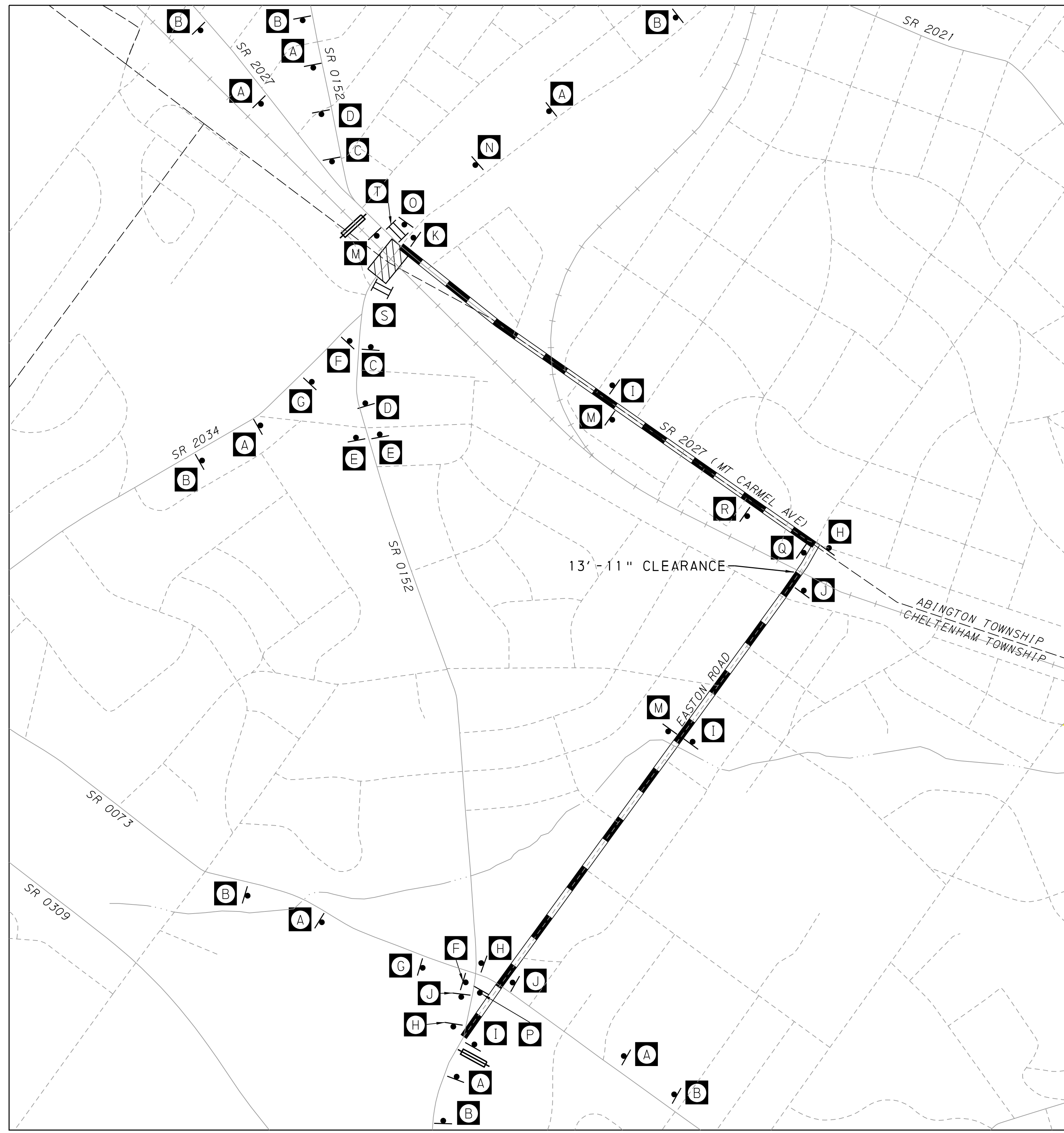


DISTRICT	COUNTY	ROUTE	SECTION	SHEET
6-0	MONTGOMERY	0152	LPS	12 OF 12
CHELTENHAM AND ABINGTON TOWNSHIPS				
REVISION NUMBER	REVISIONS	DATE	BY	

PCMS RECOMMENDED MESSAGES AS FOLLOWS OR AS DIRECTED:

WHEN	SCREEN 1	SCREEN 2	SCREEN 3
7 DAYS PRIOR TO IMPLEMENTING WEEKEND DETOUR	PA 152 TO BE CLOSED	AT EDGE HILL ROAD	<DATE>
DURING DETOUR	PA 152	CLOSED AT EDGE HILL ROAD	FOLLOW PA 152 DETOUR



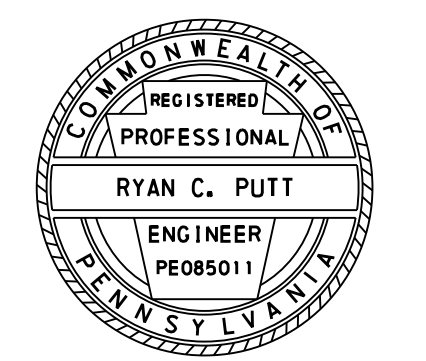
LEGEND

DETOUR ROUTE		WORK AREA	
STATE ROUTE		SIGN	
OTHER ROAD		TYPE III BARRICADE WITH SIGN	
RAILROAD		TYPE B FLASHING LIGHT (YELLOW)	
MUNICIPAL BOUNDARY		PORTABLE CHANGEABLE MESSAGE SIGN	
STREAM			

NOTES

- OVERALL DETOUR LENGTH = 1.5 MILES
- INSTALL TYPE B YELLOW FLASHING LIGHTS ON TOP OF TYPE III BARRICADES AND WARNING SIGNS AS SHOWN.
- SEE STAGE 1 AND STAGE 2 PLANS FOR ADDITIONAL TRAFFIC CONTROL.
- PROVIDE FLAGGER AT INTERSECTION OF EASTON RD AND MT CARMEL AVE AT ALL TIMES TO DIRECT TRUCK TRAFFIC COMPLETING RIGHT TURN MOVEMENTS.
- UTILIZE PORTABLE CHANGEABLE MESSAGE SIGNS TO INDICATE OVERNIGHT DETOUR AS DIRECTED BY THE REPRESENTATIVE.
- ALL SIGN ASSEMBLIES GREATER THAN NINE (9) SQUARE FEET MUST BE MOUNTED ON TYPE 3 BARRICADES OR GROUND MOUNTED TYPE B POSTS. REFER TO TC-8717, NOTE 2.

SR 0152 DETOUR



10/2/2019 6:21:50Z S-TR-DTRO1