

DISTRICT	COUNTY	ROUTE	SECTION	SHEET
6-0	MONTGOMERY	--	--	1 OF 1
CHEL TENHAM TOWNSHIP				
REVISION NUMBER	REVISIONS	DATE	BY	

GENERAL NOTES

THIS WORK CONSISTS OF THE MAINTENANCE OF TRAFFIC AND THE PROTECTION OF THE TRAVELING PUBLIC APPROACHING THE CONSTRUCTION AREA AND WITHIN THE LIMITS OF CONSTRUCTION.

FURNISH, ERCT, PLACE AND MAINTAIN TRAFFIC CONTROL SIGNS AND DEVICES AND MAINTAIN TRAFFIC DURING HOURS OF CONSTRUCTION AND AT ALL OTHER TIMES IN ACCORDANCE WITH THE METHODS INDICATED ON THESE DRAWINGS AND,

1. THE SPECIAL PROVISIONS OF THE CONTRACT
2. PA CODE, TITLE 67, CHAPTER 212, OFFICIAL TRAFFIC CONTROL DEVICES
3. PDT PUBLICATION 213, WORK ZONE TRAFFIC CONTROL GUIDELINES
4. PDT PUBLICATION 35, APPROVED CONSTRUCTION MATERIALS (BULLETIN 15)
5. PDT PUBLICATION 408, SPECIFICATIONS
6. MANUAL ON UNIFORM TRAFFIC CONTROL DEVICES (MUTCD)

IMMEDIATELY UPON COMPLETION OF THE WORK, REMOVE THE DEVICES. THE DEPARTMENT WILL REMOVE ANY TRAFFIC CONTROL DEVICES ERCTED BY DEPARTMENT FORCES.

COVER OR REMOVE ALL SIGNS NOT IN USE. ALL DISTANCES MAY BE ADJUSTED SLIGHTLY TO FIT FIELD CONDITIONS.

DURING HOURS OF DARKNESS, ALL SIGNS SHALL BE REFLECTORIZED OR ILLUMINATED.

EXISTING TRAFFIC CONTROL DEVICES SHALL BE MODIFIED AS NEEDED FOR THE DURATION OF THE DETOUR.

UNLESS OTHERWISE SPECIFIED, ALL TRAFFIC CONTROL DEVICES FOR THE DETOUR SHALL BE FURNISHED, ERCTED, MODIFIED, MAINTAINED AND SUBSEQUENTLY REMOVED BY THE CONTRACTOR FOR CONTRACT OPERATIONS.

THE CONTRACTOR IF DIRECTED BY THE PENNDOT INSPECTOR MAY BE REQUIRED TO TRIM LOW LYING TREES ALONG THE DETOUR ROUTE TO A MINIMUM HEIGHT OF 14'-6" FOR VISIBILITY OF THE DETOUR SIGNS.

INSTALL ADVANCE ROAD CLOSURE SIGN "*" 14 DAYS PRIOR TO ROAD CLOSURE.

INSTALL ROAD CLOSED SIGN "A" AT THE BEGINNING AND END OF WORK AREAS. READJUST SIGN LOCATIONS AS WORK MOVES ALONG VALLEY STREET.

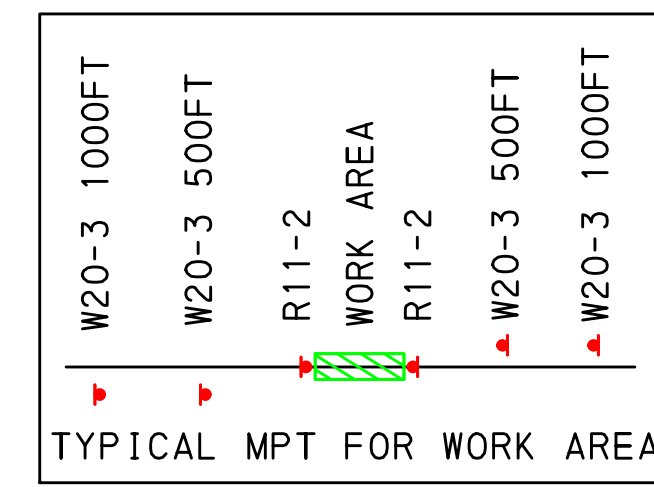
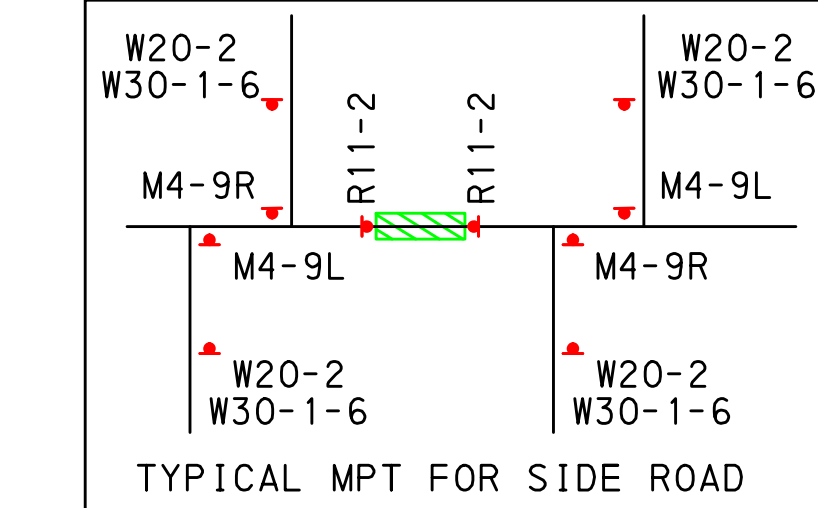
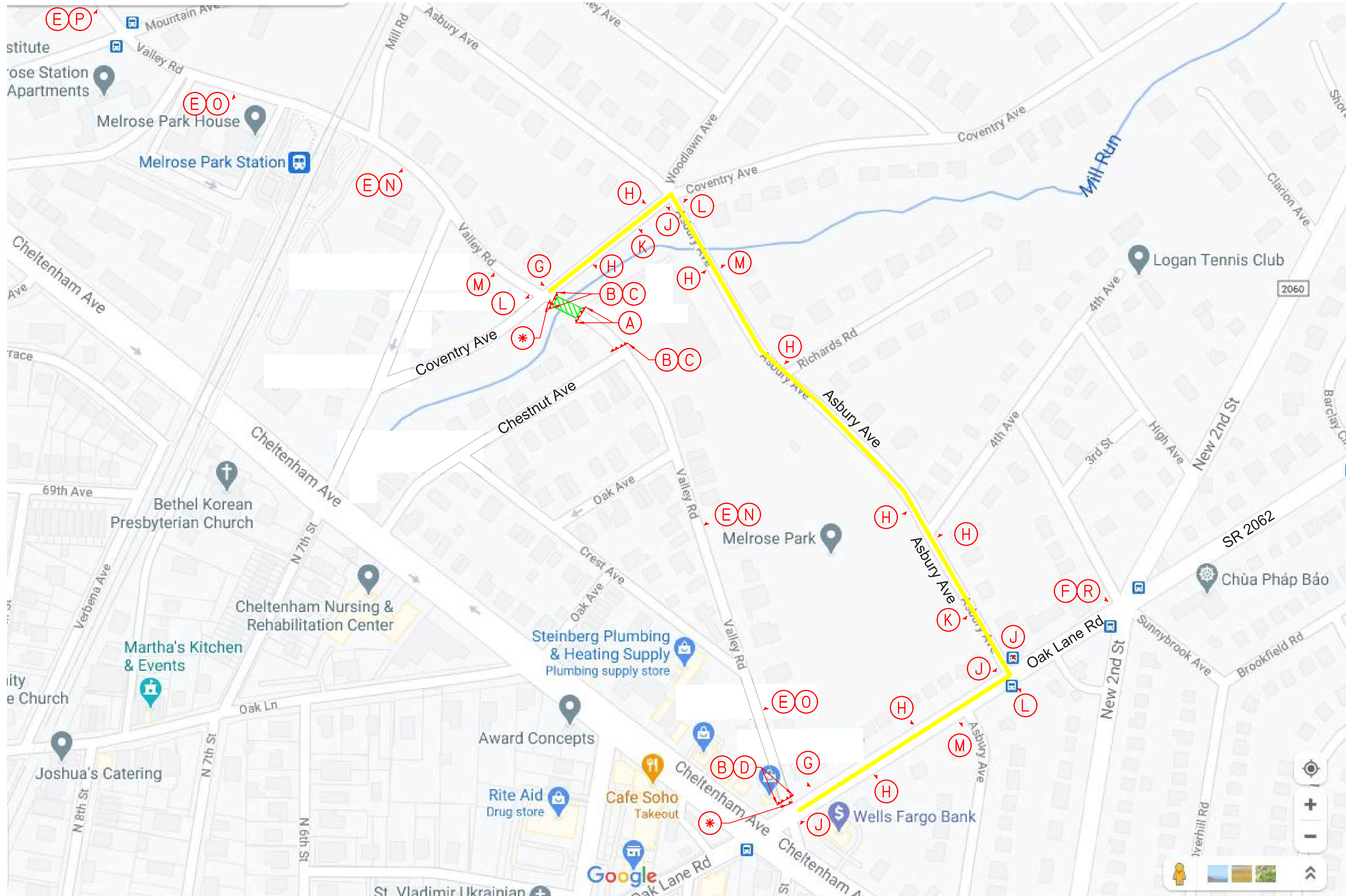
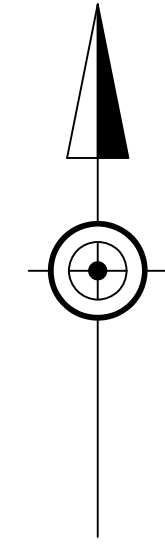
NOTIFY THE DISTRICT 6 REGIONAL TRAFFIC MANAGEMENT CENTER (610-205-6934) 15 MINUTES IN ADVANCE OF ANY PROPOSED LANE OR SHOULDER RESTRICTIONS, ROAD CLOSURE, OR ANY OPERATION IMPENDING THE FLOW OF TRAFFIC. NOTIFY THE RTMS WHEN THE ROAD IS RESTORED TO NORMAL OPERATION.

DURATION OF WORK TO LAST 2 WEEKS. 24 HOUR CLOSURE.

*SP-1 SIGN TO BE USED IF REQUIRED BY PENNDOT OR TOWNSHIP

LEGEND

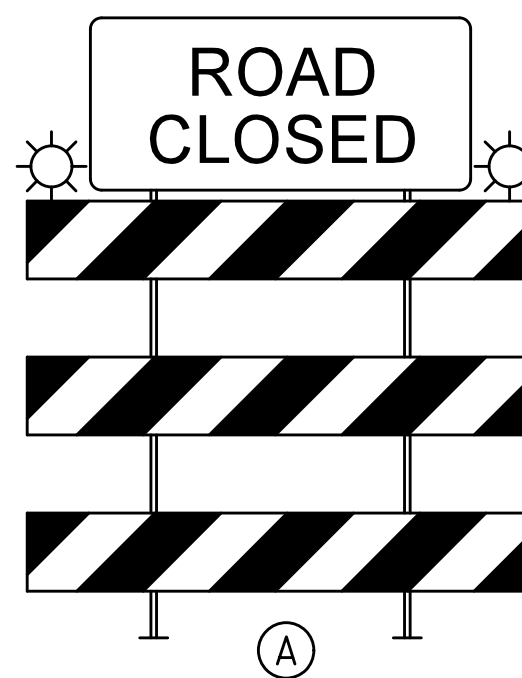
- PROPOSED SIGN LOCATION - SINGLE POST
- TYPE III BARRICADE WITH SIGNING
- TYPE B FLASHER (AMBER)
- AREA OF WORK
- DETOUR ROUTE



THIS ROAD TO BE CLOSED
<DATE>

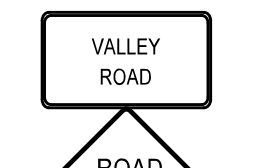
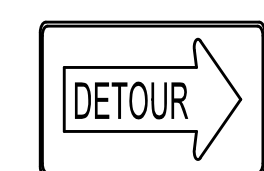
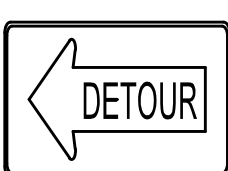
W23-101
96"x48"

POST "SIGN *" A MINIMUM OF 14 DAYS PRIOR TO THE BEGINNING OF THE DETOUR. USE THE PROPER DATE.



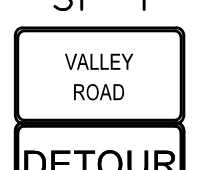
R11-2
48"x30"

R11-3A
60"x30"



W20-3
36"x36"

W20-2
36"x36"

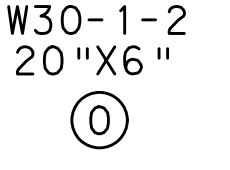
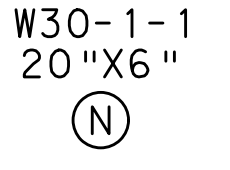


M4-8A
24"x18"

M4-9S
30"x24"

500 FT

1000 FT

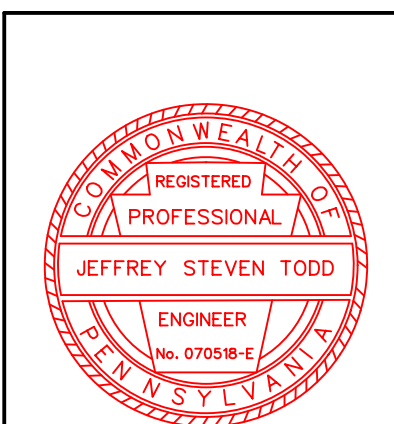


W30-1-3
20"x6"

W30-1-6
20"x6"

VALLEY ROAD
SP-1
4" LETTERS
PLAQUE
30"x18"
TYP.

D:\Projects\10-471-49 AM 11:2400



Est. 1989

TPD

TRAFFIC PLANNING AND DESIGN, INC.

www.TrafficPD.com | 717.234.1430 | TPD@TrafficPD.com

DATE: 09/25/20 | PROJECT DESIGNER: JST | JOB NO: PECO.00046

DETOUR - VALLEY ROAD

THIS IS A COPY. THE ORIGINAL DRAWING IS ON FILE WITH TRAFFIC PLANNING AND DESIGN, INC. ANY AND ALL LIABILITY IS LIMITED TO THE ORIGINAL, UP TO AND INCLUDING THE LAST REVISIONS.